



Maxwell[®] FSC System

*Upgraded
User Experience.
Same Great
Performance.*





The Maxwell[®] FSC System

The Maxwell[®] FSC Instrument, along with DNA IQ chemistry, offers easy-to-use, consistent, automated nucleic acid extraction from casework samples such as blood stains, semen stains, hairs, cigarette butts, tissues and trace DNA samples.

*Simplified
Laboratory
Workflow
for All Your
Sample Types*

Preprogrammed purification methods and proven DNA IQ[™] reagents combine with an improved magnet and plunger design to process up to 16 samples in roughly 30 min. We've also improved the spin baskets for simpler handling.

Streamline Lab Operations

Gain efficiency with easy-to-use prefilled reagent cartridges.

Use a Range of Sample Types

Get proven results from a range of challenging casework samples.

Set Up a Run Quickly

Use the intuitive touch-screen interface and preprogrammed protocols to set up a run, minimize variability and save time.

Reduce Processing Time

Extract DNA from 1–16 samples in roughly 30 minutes with minimal preprocessing. New, easy-to-use spin baskets eliminate the need to manually transfer swabs. These baskets perform the sample lysis and separation of solid sample substrates (i.e., swabs, fabrics, etc.) in tandem in a single streamlined procedure.

Track Samples Easily

Critical details such as sample ID, kit ID, and kit lot number can all be recorded with the integrated barcode reader.

Maximize Bench Space

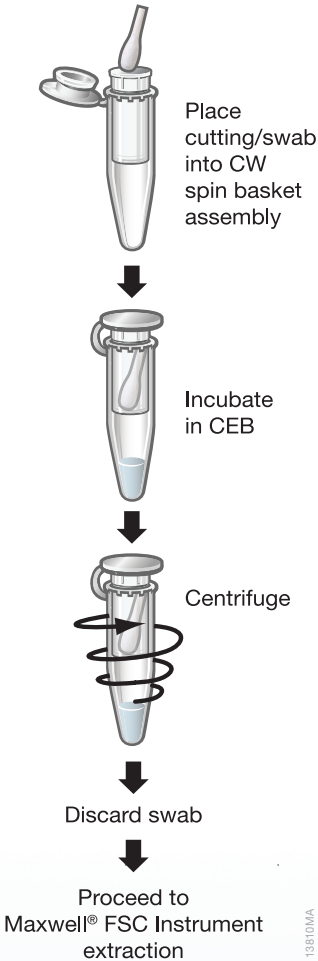
The compact footprint of the Maxwell[®] FSC Instrument conserves critical laboratory bench space (see page 7 for dimensions).



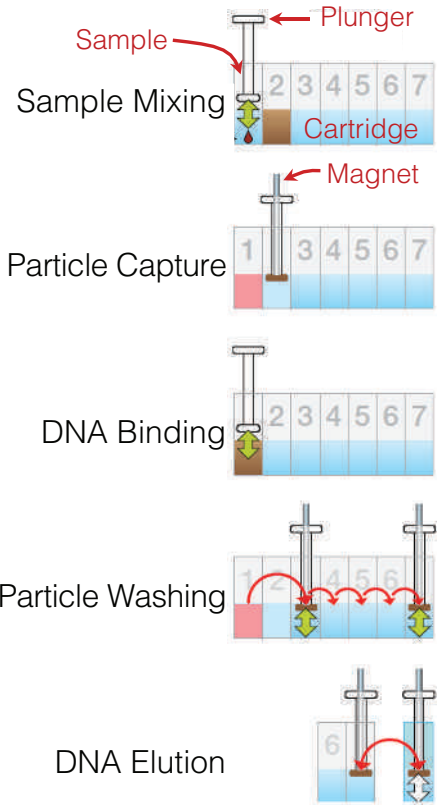
Be Confident in Your Results

Since the Maxwell® FSC Instrument is a magnetic particle mover, it delivers minimal risk of cross-contamination without the splashing that can happen during processing of samples when using liquid handling systems. The Maxwell(R) FSC Instrument is a magnetic particle mover that minimizes risk of sample cross-contamination.

Sample Preprocessing



Magnetic Particle Handling



A magnetic bar covered by a plastic sheath (plunger), moves the paramagnetic particles from well to well eliminating clogs, breakdowns and cross contamination.

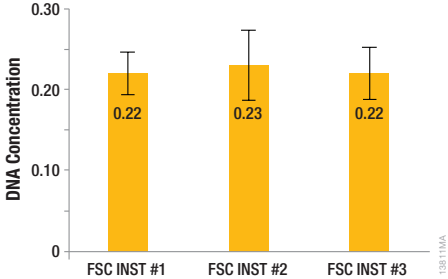
Preprocessing method for solid samples.

High-Quality DNA from Casework Samples

The Maxwell® FSC Instrument works with the Maxwell® FSC DNA IQ™ Casework Kit to extract DNA from casework samples. The kit includes cartridges pre-filled with DNA IQ(TM) purification reagent and a separate bottle of Elution Buffer. Prior to performing DNA extraction with the Maxwell® FSC DNA IQ™ Casework Kit, customers should use the Casework Extraction Kit for preprocessing of their samples.

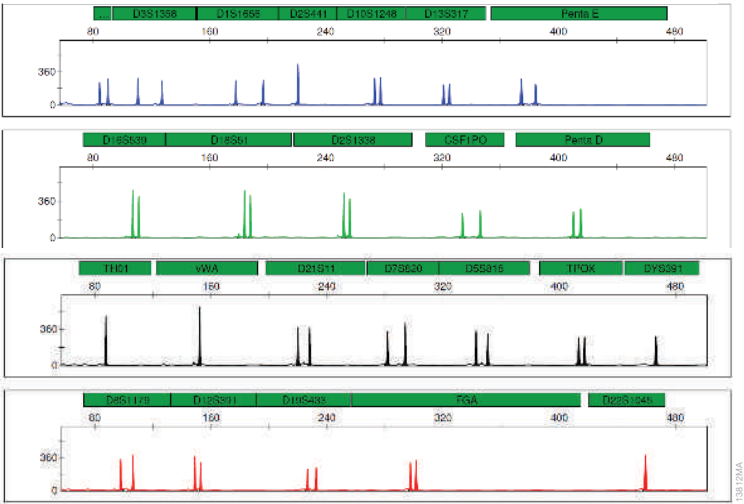
DNA purified using the Maxwell® FSC Instrument and its associated reagents is ideal for downstream applications such as quantification and STR analysis.

Quantification Using the PowerQuant® System



DNA was extracted from 1µl of blood dried on a cotton swab using the Maxwell® FSC DNA IQ™ Casework Extraction Kit and the Maxwell® FSC Instrument (N = 3).

STR amplification using the PowerPlex® Fusion 6C System



DNA was extracted from 1µl blood on a cotton swab using the Maxwell® FSC DNA IQ™ Casework Extraction Kit and the Maxwell® FSC Instrument. The PowerPlex® Fusion 6C System was used to amplify 0.5ng of template DNA and the amplification products were separated using an Applied Bio systems® 3100 Genetic Analyzer (3kV, 5-second injection).



Support and Service Options

The Maxwell® FSC Instrument is backed by a comprehensive one-year standard warranty, an expert service team and a full line of additional service products. With our service and support options, you can be confident that your instrument will be ready when you need it .

- Fixed-Cost Service Products — Predictable support expenditures for simplified budgeting.
- Factory-Trained Service Specialists — Our team offers consistent and reliable service.
- Comprehensive Service and Support — Promega helps ensure that your equipment is working properly and is ready when you need it.

SERVICE AGREEMENT BENEFIT	STANDARD	PREMIER
Period	Renewable annually	Renewable annually
Parts and Labor	Yes	Yes
Shipping	Yes	Yes
Loaner Instrument	Yes, 5–7 business days	Yes, 24 hours*
Field Support	No	Yes, 48 hours*
Annual Preventive Maintenance	No	Yes, 1 per 12 months

Our standard and premier service packages allow you to choose your level of support after the warranty period expires.

*Where available

Specifications, Components and Ordering Information

Specifications

Processing Time: 30 minutes

Number of Samples: Up to 16

Weight: 24.2lb (11kg)

Dimensions (W × D × H): 13 × 13.6 × 11.8 inches (330.2 × 345.2 × 299.7mm)

Power Requirements: 100–240VAC, 50/60Hz, 2.5A

Fuse: 250VAC, 2.5A, low breaking capacity, time-lag fuse (AC250V, T2.5AL, 5 × 20mm)

UV Bulb: Average lifetime approximately 6,000 hours, length 135.9mm, diameter 16mm, 4W, 0.17A current, 29V, spectral peak F 253.7, UV output 0.9W

Instrument Standard Components

Maxwell® FSC Instrument, with integrated bar-code reader

Tablet PC preloaded with Maxwell® FSC Application Software

USB Cable for connection of the Maxwell® FSC Instrument to the Tablet PC

Power Cable for Maxwell® FSC Instrument

Power Cord for Tablet PC

Maxwell® Forensic Sample Concentrator Deck Tray

UV Bulb (installed)

Tablet PC Holder

Quick Start Guide

Setup Guide

Ordering Information

Product	Size	Cat.#
Maxwell® FSC Instrument	each	AS4600
Maxwell® FSC DNA IQ™ Casework Kit	48 preps	AS1550
CW Spin Baskets	50/pk	AS8101
CW Microfuge Tubes, 1.5ml	50/pk	AS8201
Casework Extraction Kit	100 preps	DC6745

For more information visit:

promega.com/MaxwellFSC

The Power to Solve



Maxwell, Plexor, PowerPlex and PowerQuant are registered trademarks of Promega Corporation. AmpSolution, Differex, DNA IQ, Identity Automation, PunchSolution, Slicprep and SwabSolution are trademarks of Promega Corporation.

Applied Biosystems is a registered trademark of Applied Biosystems.

Products may be covered by pending or issued patents or may have certain limitations. Please visit our Web site for more information.